

Perfect fit

Period fixtures and finishes give this DIY bath redo its been-there-forever appearance

By GILLIAN BARTH + Photographs by JÜRGEN FRANK

Choose a focal point, some designers say, and the rest will fall into place. Tom and Arleen Mulligan of Rumson, New Jersey, selected a claw-foot tub that they found not in a salvage yard but in a storage room on the third floor of their 1895 Queen Anne. Though the 87-square-foot space tucked under the roof “was a crooked mess,” Tom says, the couple realized they could turn it into a master bath, with the tub as its centerpiece. Tom, a seasoned renovator, fixed the slanted floor, re-framed the crooked doorway, created drop ceilings to accommodate can lights, skim-coated the old plaster, and made crown to match the house’s original. The couple found period-style pedestal sinks to complement the tub, and an irresistible deal on marble floor tile. A plumber helped install the sinks, a glassed-in shower, and that tub. Freshly painted and with chrome-plated feet, it grabs the spotlight. “After four months of lugging stuff up and down stairs,” says Tom, “we finally have a master bath that fits perfectly with the rest of the house.”

Paint in a soft taupe unites the varied ceiling heights.



{ before }

before

The third-floor storage space had a dusty shelf and not much else.

after

The cozy master bath draws Arleen Mulligan, as well as daughters Ryanne, 10, and Morgan, 12.

before+after: **bath**

• the key details

↓ **Vintage-style elements** include curved-front pedestal sinks, oval-mirror medicine cabinets, and white subway tile with an inset of brown-glass border tiles. *Sinks and cabinets: Kohler. Wall paint: Behr's Pebble Stone*



An → **Edwardian-style tub filler** completes the claw-foot tub.

Tub faucet and handshower: Van Dyke's Restorers



homeowner tip

TOM MULLIGAN, RUMSON, N.J.

"To hide the fun-house effect of a crooked room, grade the floor to be level with the existing windows. Then reframe the door to be square with the floor."



↑ **An ornate register** serves as a plumbing access panel. *Grill: Reggio Registers*

← **Hot-water radiant heat** flows under the marble tile and through a towel warmer with shutoff valves at the base. *Towel warmer: Hudson Reed*

luxé for less

Find 13 ways to get a low-cost vintage-look for your bath at thisoldhouse.com/sep2011

• before + after

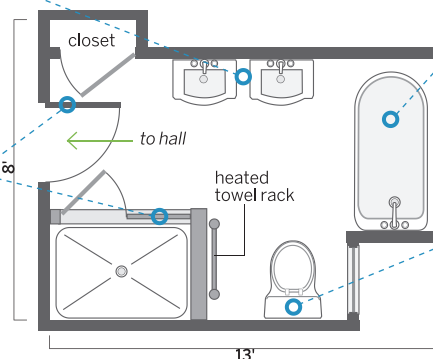
At 87 square feet, the top-floor storage area was big enough to convert to a master bath. The two windows were replaced with energy-efficient sashes, and an existing closet was preserved for linens.

1_ **Chose pedestal sinks** with curved fronts to ease traffic flow and preserve an open look.

2_ **Brightened the space** by choosing a divided-light door (with privacy glass) and a shower enclosure with glass on two sides.

3_ **Tucked the tub** under the eaves, directly across from the entry to the room.

4_ **Hid the toilet** in an alcove created by the shower stall and the short wall next to the tub.



FLOOR PLAN: IAN WORPOLE